

INSTALLATION INSTRUCTION PJ1002 FRONT STUBBY CRAWLER NON-WINCH BUMPER

UNPACK YOUR BUMPER AND CHECK THE PACKAGE CONTENTS AGAINST THE FOLLOWING LIST. If you do not have all the parts listed below, call 661-304-0360.

Package contents:

- 1)PJ1002 Outer bumper shell
- 1)Hardware kit consisting of the following:
 - 8) 1/2-13 x 2-1/2 button head cap screws
 - 8) 1/2 flat washers
 - 8) 1/2 lock washers
 - 8) 1/2-13 nuts
 - 2) 5/16 thick spacers
 - 2) 7/16 thick spacers



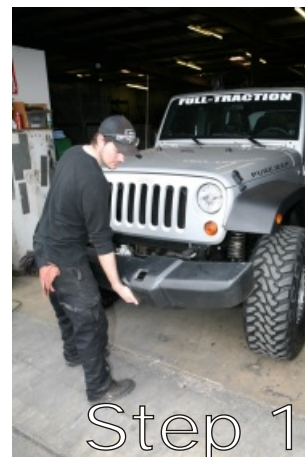
Disclaimer

PUREJEEP has made every effort to provide correct information. Each item has been fit checked for accuracy. PUREJEEP reserves the right to alter, make changes or replace part numbers and descriptions without notice. PUREJEEP will not be held responsible for changes or misprints or manufacturing changes made by the vehicle manufacturer. For questions regarding PUREJEEP components call our Technical Support Department at 661-304-0306

BEGIN THE INSTALLATION

STEP 1

Remove the factory bumper per the manufacturers service manual. We've found that removing the plastic cover over the frame rails and the lower air dam can be done with a #2 Phillips screw driver. Simple back out the push pins in the center of the retaining clips. If they will not back out, a panel clip tool, available at most auto parts stores maybe required. With these two panels off, the eight nuts that retain the bumper from the back side can be removed and the bumper along with tow hooks and inner bumper support can be removed. Note: if you have factory fog lamps be sure to disconnect the lights before removing the bumper. Simply twist the lights 1/4-turn and pull them out of the lamp housing.



STEP 2

With the factory front bumper and hardware removed you can begin the installation of your new PUREJEEP.com front bumper. First drill out the upper outside holes on each of the front bumper mounting flanges on the frame. These holes need to be drilled 9/16 to provide proper clearance for the new mounting bolts. Note that the passenger's side hole is actually a slot and you will need to take care when drilling this hole as the drill will tend to grab.



STEP 3

With the holes drilled, install four of the button head bolts into the bumper mounting holes on the frame ends, two to a side. These bolts are installed from the back side and used to help with the install, they will be reversed and installed from the front later.



Step 4

Place two spacer plates over the bolts in the bumper mounting flanges. Be sure to use one each of the 7/16 and 5/16 plates so that the stack is 3/4 of an inch on each side. The spacers have a taper and the wide side goes on the top.

Step 5 (No Photo)

Remove the factory fog lamps from your stock bumper and reinstall them in your new PUREJEEP front bumper.

Step 6 (No Photo)

Install the PJ1002 Stubby Crawler front bumper. The bumper will slip over the bolts that are in the frame mounting flanges facing outward.



Step 7A (No Photo)

If you are not using PUREJEEP D-ring shackle mounts, you will install the remaining bolts into the holes in the bumper face from the front side, pushing out the existing bolt used for setup that are facing outward. Then install these bolts in the remaining holds in the bumper face. We've found it best to install one bolt per side from the front and then push out the remaining bolts using each bolt in reverses as it is removed from the original setup position. This prevents the two spacers from slipping down during the install.

STEP 7B (No Photo)

If you are using PUREJEEP D-ring shackle mounts, you will use the 3-inch bolts provided with them. Place the D-ring Shackle mounts over the bolts facing out from the bumper. Now install two of the 3-inch bolts in the empty holes. Next install the remaining bolts into the holes in the bumper face from the front side, pushing out the existing bolt used for setup that are facing outward. We've found it best to install one bolt per side from the front and then push out the remaining bolts using each bolt in reverses as it is removed from the original setup position. This prevents the two spacers from slipping down during the install.

STEP 8

The bolts in the bumper face can now have the washers, lock washers and nuts installed on the bolts and tightened. The bolts can be accessed from the back side using a selection of extensions as required. The two outer bolts and the inner, lower bolts can be tightened by reaching up from the bottom. The two inner-upper bolts are easy to access from the backside with a socket and extension. Not that on Rubicon models, the swaybar disconnect motor is in the way of the upper inner passenger side bolt. A swivel socket is recommended to ease access to this bolt. You can now install the two factory fog lamp bulbs into the light housings now mounted into the PUREJEEP bumper.

Step 9

Check that all the bolts are tight one last time and you are done with your installation.

